



# TITAN MODEL XL

## S/SL and PTV Inlet

### Introduction

The TITAN MODEL XL is the latest advancement in GC inlet technology. With S/SL and PTV capability there is no application that the TITAN MODEL XL can not handle. A proprietary coil and cartridge heater gives the TITAN MODEL XL *best in class* performance in both S/SL and PTV mode. The TITAN MODEL XL also comes standard with Inertium™ coating making it the most inert GC inlet available.

### Features

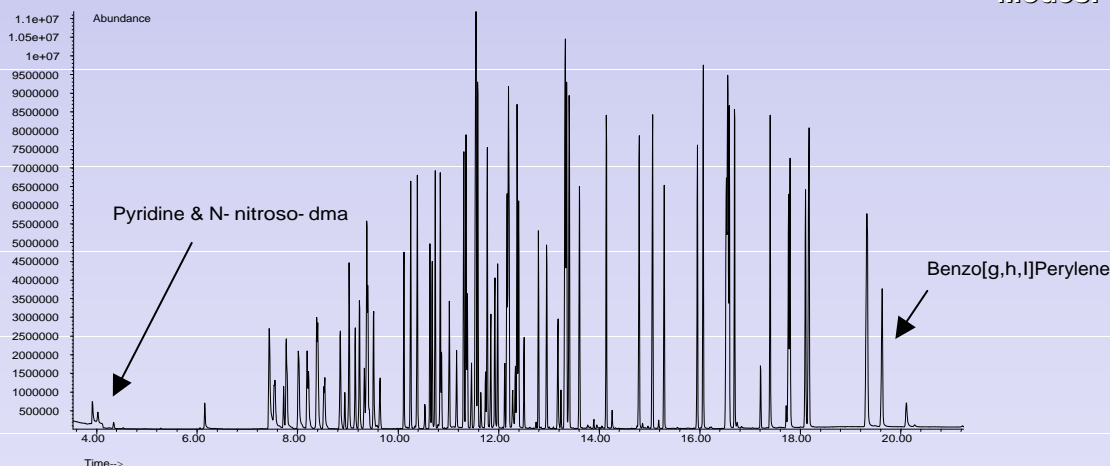
- **Universal Capabilities**  
TITAN MODEL XL can work in the following modes:  
Split, Splitless, Pulsed Split/Splitless and Solvent Vent.
- **Inertium™ Coating**  
Completely Inert Sample Path  
Reduces Breakdown and Increases Response
- **Liner Options**  
Unique Liners for LVI, S/SL and SPME/SPDE applications  
Single and Multiple Baffle, Borosilicate, Fused Silica and Quartz



### Applications

The ability to work in both S/SL and PTV modes along with the Inertium™ coating makes the TITAN the perfect choose for a diverse range of applications as well as for method development.

#### EPA 8270 20µl Injection



### Specifications

Injections Vol:	1-1000µl
Maximum Temp:	500°C
Ramp Rate:	720°C/min
Upgradeable:	TITAN MODEL 2-D
Cooling Options:	LN2, CO2, AIR
Heater Watts:	140
Modes:	S/SL, PTV, LVI