

## Infrared Detector

### GC/IRD/MSD ANALYSIS OF SOME MINOR COMPONENTS IN CORIANDER OIL

#### Introduction

Coriander oil, used extensively in seasoning and perfumes, is obtained by the steam distillation of the partially dried ripe fruits of *Coriander sativum* L. The major areas of cultivation are the USSR, Poland and Hungary, as well as many additional countries with temperate climates. The oil is pale yellow with the odor of linalool, its major components (60-80%). Other components are mainly terpene hydrocarbons such as alpha pinene, gamma terpinene, camphor and para cymene. There are many other minor components. To illustrate the utility of combined GC/IRD/MSD in the area of essential oil analysis, two of these minor components of Russian coriander oil were examined and their identities confirmed at a high confidence level. Also several residual contaminants were found

#### Results

The examination of Russian coriander oil, see Figure 1, by combined GC/IRD/MSD was performed using the series configuration where all of the column effluent is sent first through the flow cell of the IRD and then a portion of the flow cell effluent, ca. 15%, is sent to the MSD. This arrangement gives similar chromatographic sensitivities. A more thorough discussion of these operational considerations is documented elsewhere.

ASAP, LLC  
1511 Neave Street  
Covington, KY 41011  
ph: 877-987-2800 or  
859-581-6990  
fx: 859-581-6821  
info@asapanalytical.com  
www.asapanalytical.com  
date founded: 1999



## Infrared Detector

The first ten minutes of the coriander oil chromatograms are shown in Figure 2 along with the peak assignments. The differences in signal size in the MSD's total ion chromatogram are apparent. By having both MS and IR data it is much easier to identify these components. The early components appear to be solvent residues from the oil preparation. Aromatic C-H absorption is observed in the IR spectra of the peak at 7.4 minutes while a strong  $m/z$  91 ion is observed in the mass spectrum, strongly suggesting the presence of toluene. Oxygen, nitrogen, water and ethanol all have ions less than  $m/z$  33 (the lowest mass limit used here) and hence are not seen on the Total Ion Chromatogram (TIC).

The major components of Russian coriander oil are noted on the chromatograms in Figure 3 and in Table 1. To illustrate the qualitative capabilities of the combined IRD/MSD, peak 3 at 17.3 minutes and peak 6 at 19 minutes were chosen. These peaks were identified by Chialva and Gabri. It can be seen in Figure 4 that the TIC/Total Response Chromatogram (TRC) response of peak 3 is fairly similar but the IR response is relatively weak for peak 6, however a good infrared spectrum was obtained.

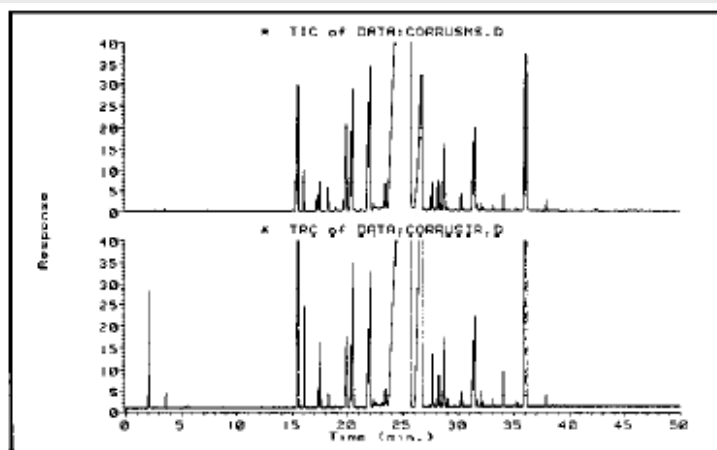


Figure 1. TIC and TRC of Russian Coriander Oil

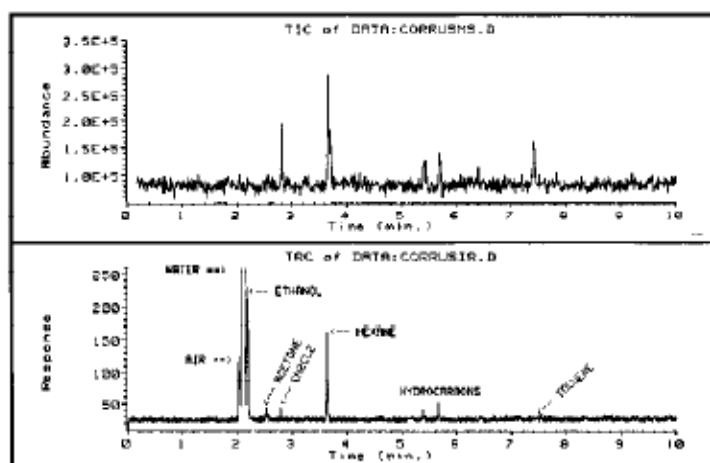


Figure 2. TIC and TRC of the first ten minutes

ASAP, LLC  
1511 Neave Street  
Covington, KY 41011  
ph: 877-987-2800 or  
859-581-6990  
fx: 859-581-6821  
info@asapanalytical.com  
www.asapanalytical.com  
date founded: 1999

## Infrared Detector

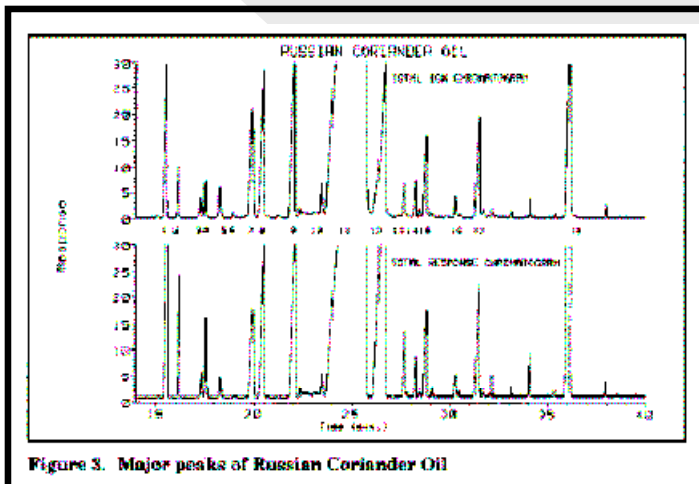


Figure 3. Major peaks of Russian Coriander Oil

Peak no.	Compound
1	alpha pinene
2	camphene
3	sabinene
4	beta pinene
5	myrcene
6	alpha phellandrene
7	para cymene
8	limonene
9	gamma terpinene
10	linalol oxide b
11	linalol
12	caraphor
13	borneol
14	linalol oxide d
15	alpha terpineol
16	mentol
17	geranyl
18	geranyl acetate

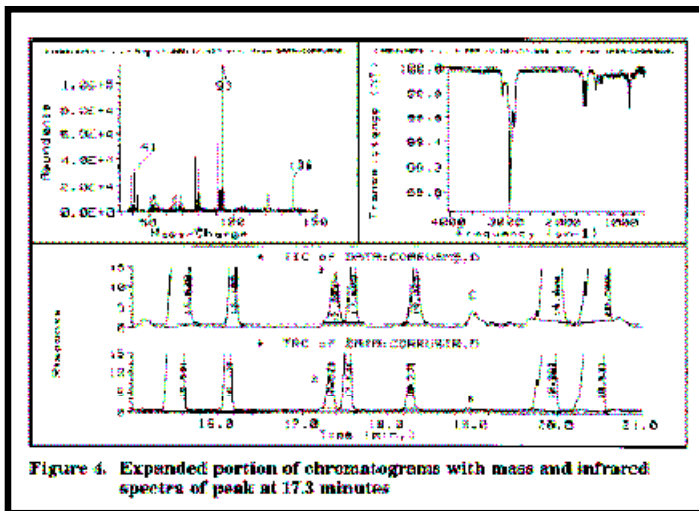


Figure 4. Expanded portion of chromatograms with mass and infrared spectra of peak at 17.3 minutes

The infrared and mass spectra of peak 3 are shown in Figure 4. The IR spectrum was searched against the 2000 entry Robertet Flavor and Fragrance Vapor Phase IR Library and the mass spectrum was searched against the 43000 entry NBS Library. Sabinene was the only common hit from both hit lists. Similarly the spectra

from peak 6 are shown in Figure 5. The combined library search indicated the compound to be alpha phellandrene. This is indeed exceptional considering that the IR spectrum represents ca. 3 nanograms and the mass spectrum ca 1/2 nanogram.

The HP 5965B has the capability to view infrared spectra and up to four selected wavelength chromatograms in real time. Figure 6 is an example of a selected wavelength chromatogram (SWC) that shows the infrared absorption from 1748 to 1761  $\text{cm}^{-1}$  indicating that those components are esters. The peak at 36.0 minutes is indeed an ester, geranylacetate. Further IRD/MSD work on coriander oil will utilize the power of selected wavelength chromatography to help identify the minor components.

ASAP, LLC  
 1511 Neave Street  
 Covington, KY 41011  
 ph: 877-987-2800 or  
 859-581-6990  
 fx: 859-581-6821  
 info@asapanalytical.com  
 www.asapanalytical.com  
 date founded: 1999



## Infrared Detector

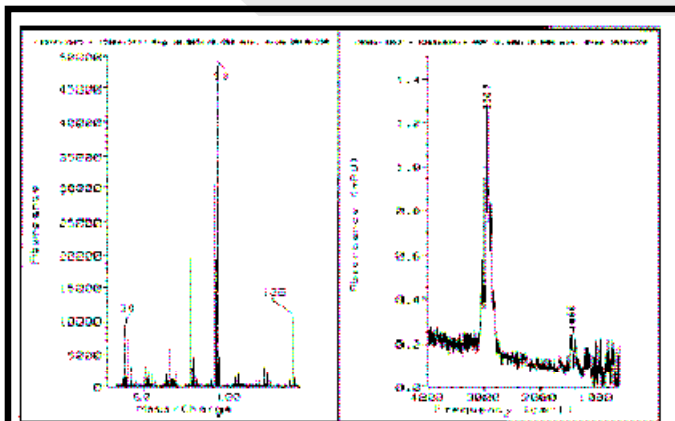


Figure 5. Mass spectrum and infrared spectrum of peak at 19.0 minutes

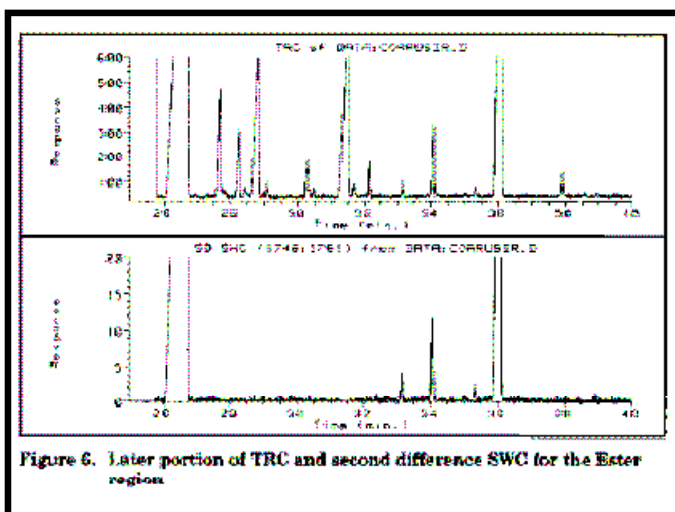


Figure 6. Later portion of TRC and second difference SWC for the Ester region

### Conclusion

The combined IRD/MSD system has been shown to be a powerful tool in the low level identification of trace components in coriander oil. The combined instrument provides a higher confidence results than either IR or MS technique alone

### Conditions

#### Gas Chromatograph

*Column:* 50m HP 1 (methyl silicone), 0.32mm id x .52um film  
*Carrier Gas:* Helium at 25psi; 2.0mL/min  
*Oven:* 40°C (2 min) to 120°C at 3°C/min  
120°C (2 min) to 220°C at 5°C/min hold 6.33 min  
*Injection Port:* 250°C

#### IRD Parameters

*Light Pipe:* 250°C  
*Transfer Lines:* 260°C  
*Resolution:* 8cm-1  
*Detector:* Wide Band MCT, 4000-550cm-1  
*Scan Rate:* 3 scans/sec

#### MSD Parameters

*Mass Range:* 33-300 daltons  
*Scan Rate:* 1.6 scans/sec (4 samples)

ASAP, LLC  
1511 Neave Street  
Covington, KY 41011  
ph: 877-987-2800 or  
859-581-6990  
fx: 859-581-6821  
info@asapanalytical.com  
www.asapanalytical.com  
date founded: 1999

